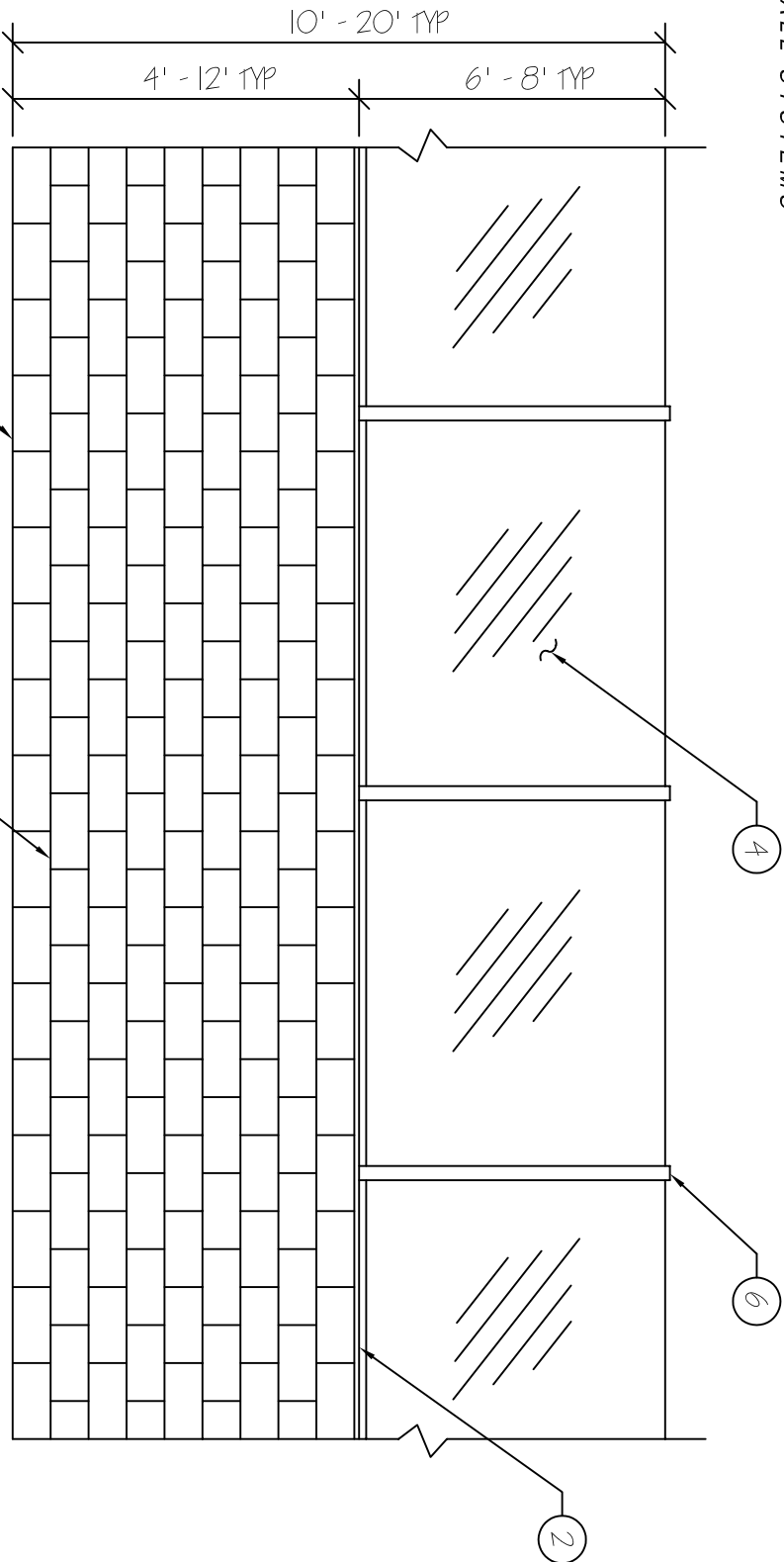


# KINSLO®

GLASS WALL SYSTEMS

1533-A E. McFadden  
 Santa Ana, CA 92705  
 (714) 568-1598  
 (714) 568-1599 FAX



LEGEND

- 1. BLOCK WALL
- 2. MORTAR CAP
- 3. FINISH GRADE

3

1

4

6

2

NOTES:

\* REFER TO STRUCTURAL AND CIVIL ENGINEERS  
 PLANS FOR SIZE AND REINFORCING  
 REQUIREMENTS.

- 4. 1/2" - 3/4" CLEAR TEMPERED GLASS VIEW PANELS,  
 INSTALLED APPROXIMATELY 5'-6" O.C.

- 5. 3" X 3" ALUMINUM MULLIONS - SEE KINSLO  
 SPECIFICATIONS FOR SPACING.

- 6. 2-1/2" X 1-1/2" ALUMINUM CHANNEL SILL BY KINSLO.

SECTION VIEW

NTS