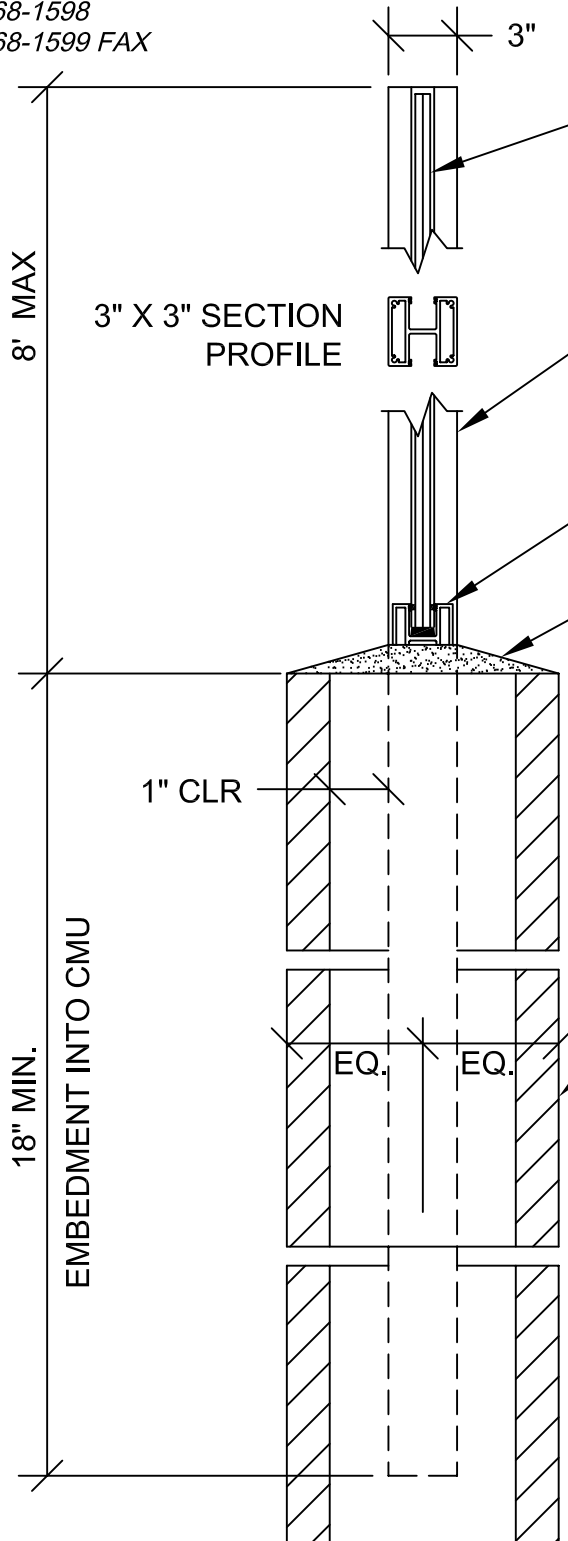


KINSLO[®]

GLASSWALL SYSTEMS

1533-A E. McFadden
 Santa Ana, CA 92705
 (714) 568-1598
 (714) 568-1599 FAX

INSTALL ALL GLASS WIND SCREEN
 COMPONENTS PER THE
 MANUFACTURER'S INSTRUCTIONS.



1/2" or 3/4" FULL TEMPERED
 GLASS ON (2) - 4" LONG
 NEOPRENE SETTING BLOCKS
 AT 1/4 PTS. OF GLASS

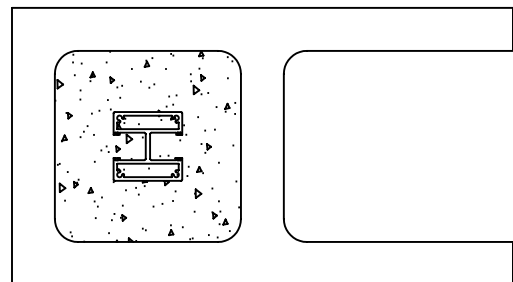
POWDER COATED EXTRUDED
 ALUM. POST
 APPROX. 5' - 6' O.C. EMBEDDED
 INTO GROUTED CMU CELL

POWER COATED
 EXTRUDED ALUM. BASE
 BETWEEN POSTS

GROUT CAP AS REQ'D

ENGINEER OF BLOCK WALL:
 VERIFY CAPACITY OF WALL
 TO SUPPORT LOADS SHOWN

GROUTED 8" CMU WALL BY
 OTHERS. CMU DESIGN ENGINEER
 TO CONSIDER THE STEEL
 REINFORCING BAR CLEARANCE
 REQUIREMENTS, AND ADVISE IF
 MULLION LOCATION NEEDS
 ADJUSTMENT.



PLAN VIEW OF MULLION

HEAVY GLASS SOUND WALL